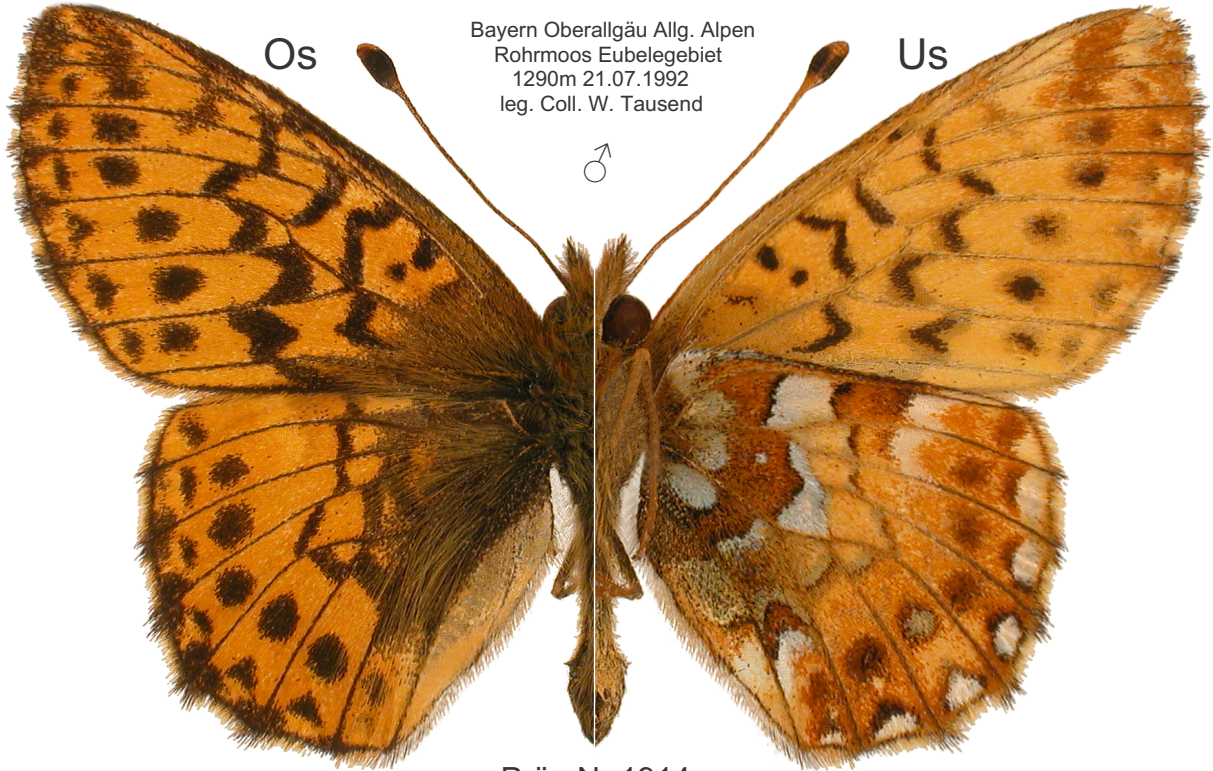


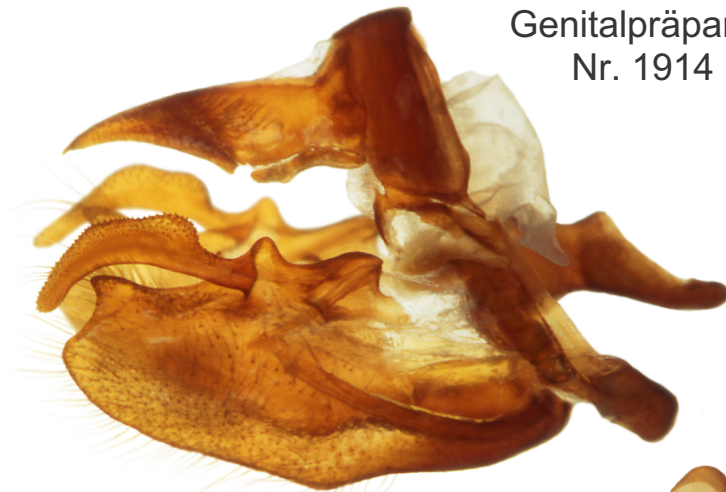
Lepidoptera Nymphalidae  
*Boloria aquilonaris* STICHEL, 1908



Bayern Oberallgäu Allg. Alpen  
Rohrmoos Eubelegebiet  
1290m 21.07.1992  
leg. Coll. W. Tausend

Präp.Nr.1914

Genitalpräparat  
Nr. 1914



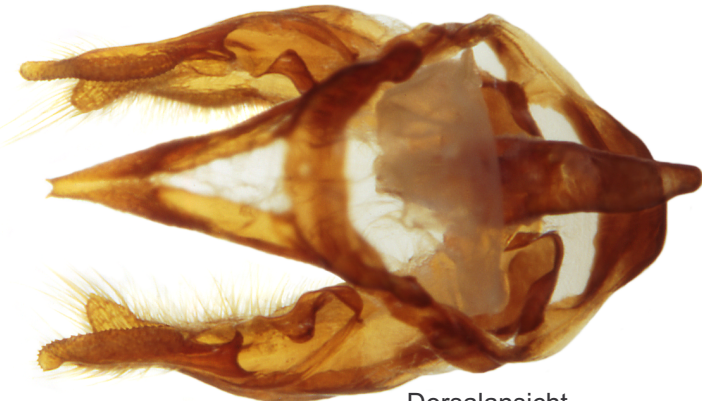
Lateralansicht anatomisch rechts



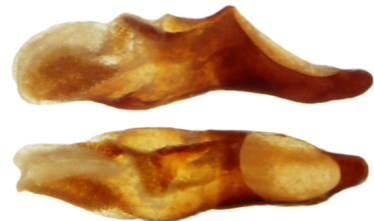
A-P View  
Aed sep.



Furca



Dorsalansicht



Aedoeagus Lateralansicht oben  
gedreht bis Dorsalansicht unten